

# RotoClone® W



---

**AAF**®  
INTERNATIONAL

Bringing clean air to life.®

## The all-in-one solution for tough dust challenges

The RotoClone® W redefines dust collection with its unique, all-in-one design. Utilising a fine mist to capture airborne contaminants, its built-in centrifugal impeller acts as both a fan and a dust separator, streamlining your dust removal process with no need for a separate fan. Ideal for handling sticky, oily, or granular dust as well as hot and humid gas streams, this compact system fits perfectly in tight spaces and requires minimal maintenance. The collected dust is seamlessly discharged with the waste stream, eliminating the need for manual intervention. As long as your water flows, so does the RotoClone® W.

## RotoClone® W for difficult dust management

Specifically designed for applications where explosive, sticky, or oil-laden dust and humid air streams make filtration difficult, the RotoClone® W offers a safe and effective solution. Fully compliant with ATEX regulations, it protects not only your operations but also your workforce. Its compact, unique design tackles the toughest dust collection challenges, delivering continuous and reliable performance.

## A strategic part in the process

Proven performance across a variety of applications:

- | Bulk Material Handling
- | Bulk Material Conveying
- | Material Processing
- | Drying, Mixing
- | Packaging
- | Commercial Kitchen Hood Exhaust
- | Industrial Fryer Exhaust



Food & Beverage



Chemical



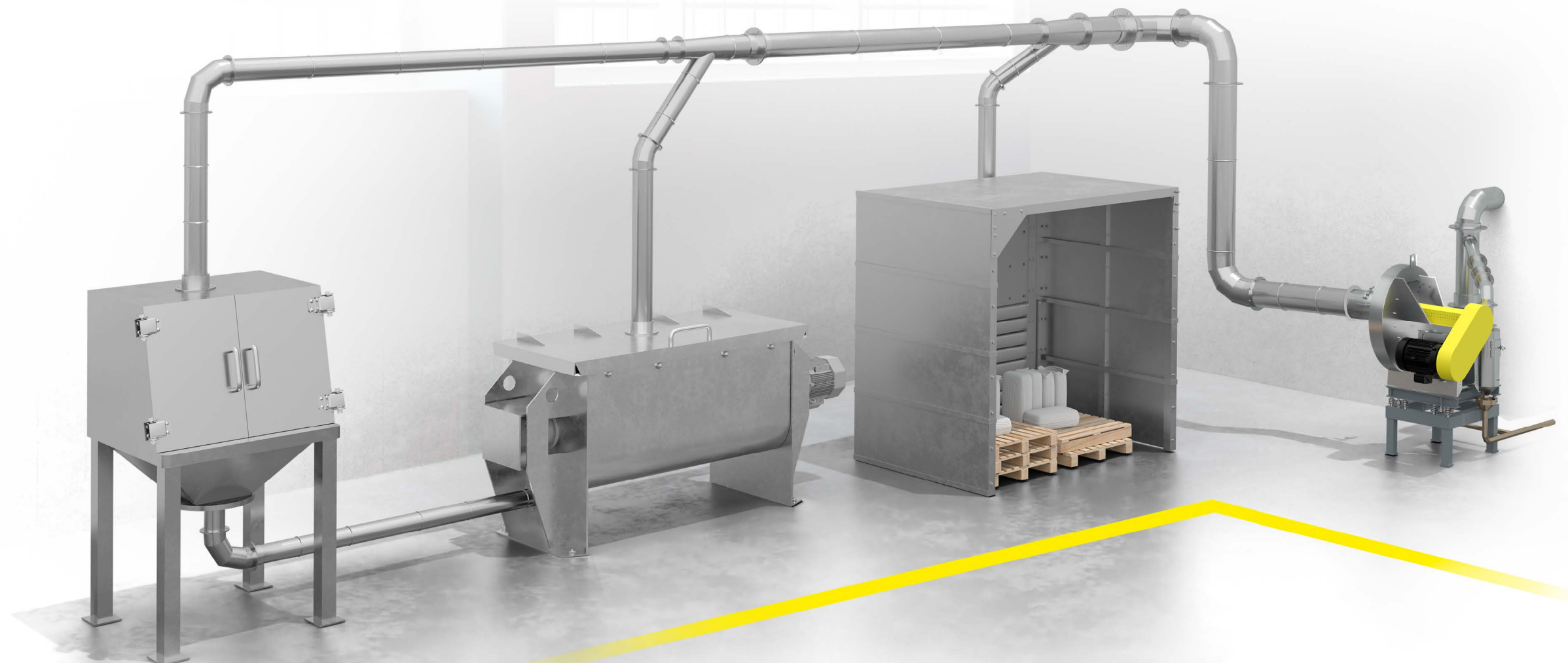
Pharmaceutical



Wood, pulp & Paper



Industrial Minerals



# RotoClone® W

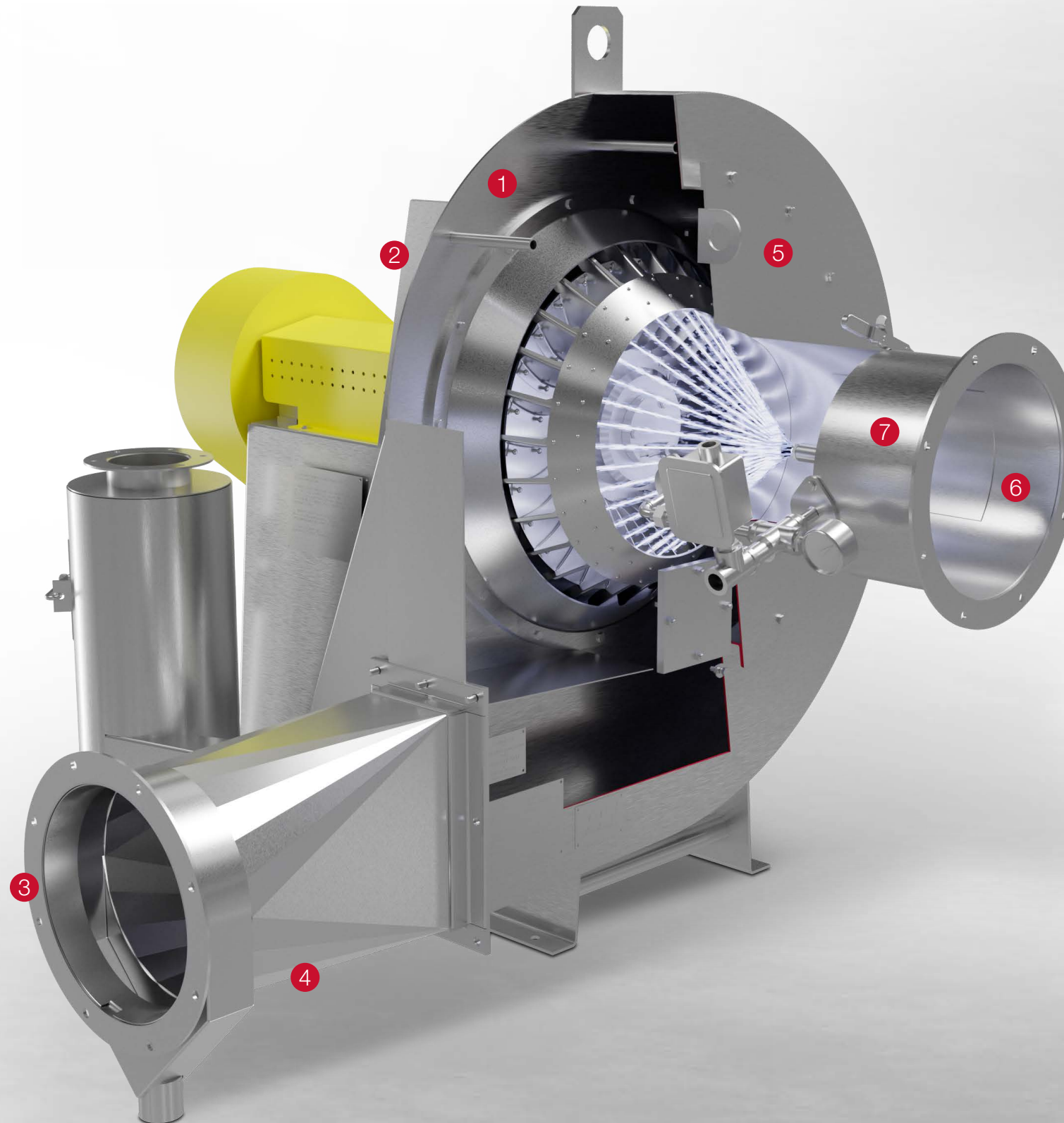
Small, cost effective, & efficient

1 Food quality design available including additional flushing nozzles, inspection doors, & the elimination of surface areas where material can accumulate.

2 Material of construction HRS. Optional in 304, or 316 SS.

3 Clean air is exhausted through the outlet, with options for a straight outlet, 90 degree upwards outlet or a centrifugal outlet which provides additional moisture removal from the airstream.

4 The water and dust being heavier than the air forms a slurry and drains from the bottom of the expansion chamber and housing of the equipment.



5 Rotating impellers cause particles to be impinged on and trapped by the flowing water film covering all surfaces of the blade.

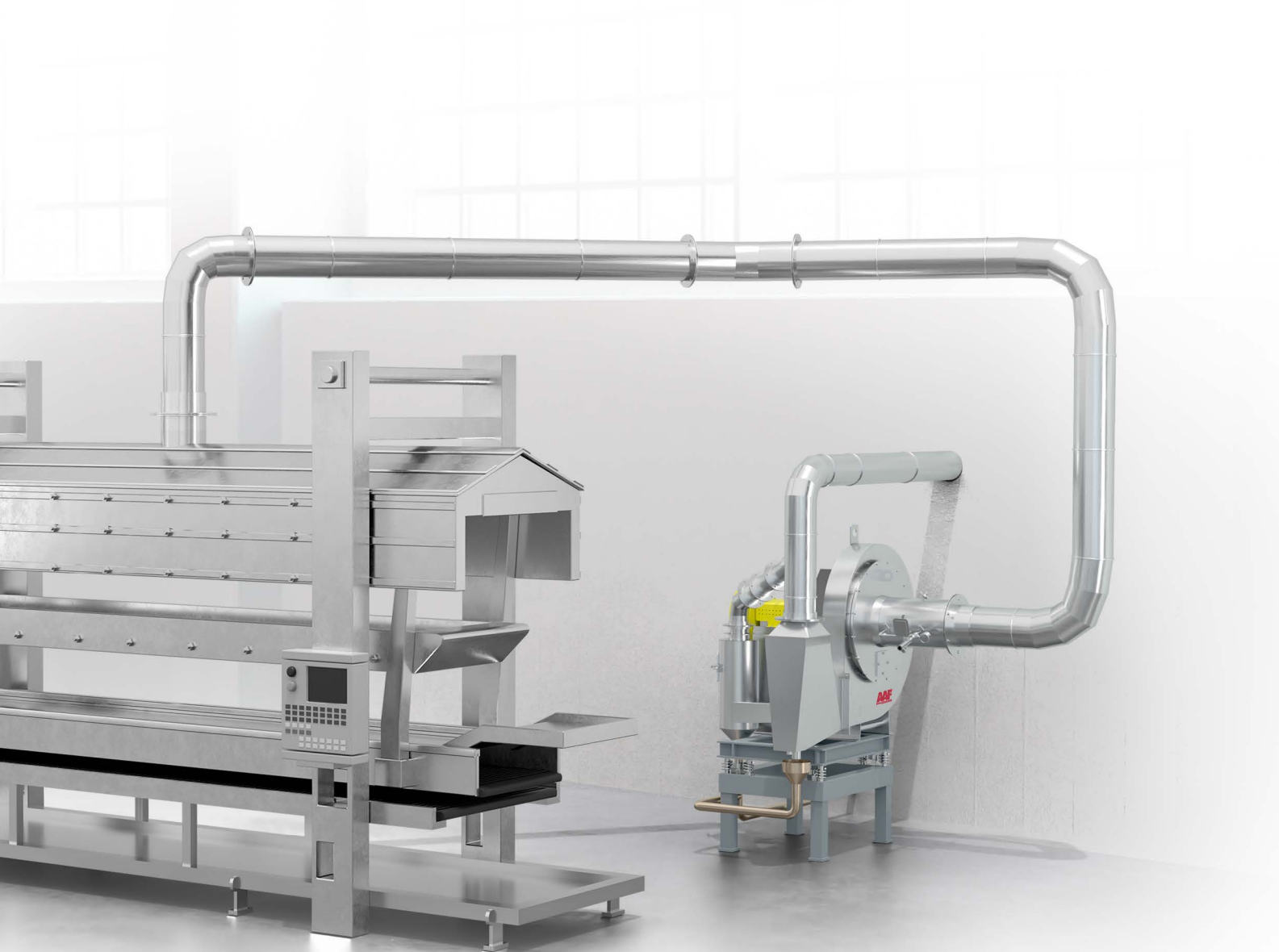
6 Dirty air stream enters the RotoClone® W as a constant exhaust air flow. Unlike barrier filters efficiency is immediate and a dust cake does not build on the filter medium reducing the air flow.

7 The Solenoid valve allows water to flow through the nozzle when the unit is running. A pressure switch monitors the water pressure, sending a signal to shut unit off if water pressure falls below acceptable level.



## Tailored flexibility for every application

Offering 12 different sizes, the RotoClone® W provides unparalleled flexibility to accommodate a diverse range of applications and dust loads. AAF has dedicated years to refining this innovative wet collection system, optimising sizes to tackle even the most demanding environments. All of this is achieved while maintaining a compact footprint, making the RotoClone® W easy to integrate into spaces where every square meter counts. No matter the challenge, the RotoClone® W is engineered to excel in harsh conditions, ensuring reliable performance wherever it's needed.



## Available options and accessories

AAF's engineering team has an extensive background in customising the RotoClone® W to meet many different specialty applications using the below accessories and options:

### Options

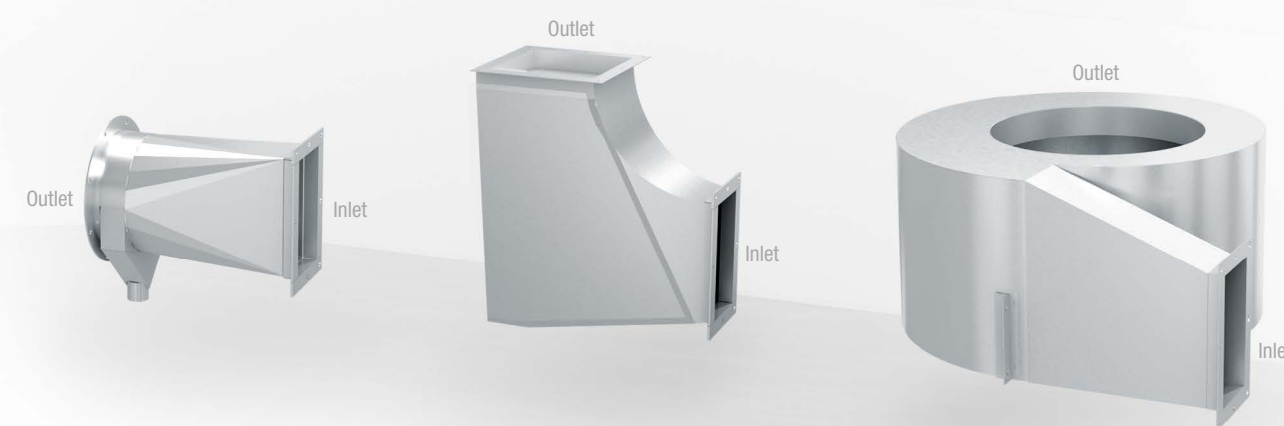
- Stainless steel construction (304 and 316)
- Food quality construction
- Vibration base with spring isolators
- Impeller flushing nozzle
- ATEX certified

### Accessories

- Afterfilter housing and filters

### Air outlet options

The RotoClone® W offers three outlet configurations: Straight outlet, 90 degree outlet, and centrifugal outlet. These options enable flexible, efficient exhaust of air from the RotoClone® into your facility or external environment, all while maintaining optimal differential pressure.



#### Straight outlet

Enables air to exhaust straight out.

#### 90 degrees outlet

Enables the air to be efficiently exhausted at a 90 degree angle.

#### Centrifugal outlet

Reduces the moisture concentration in the air prior to being exhausted outside or into the plant.



Bringing clean air to life.®

A light gray world map is centered in the background of the page, showing the continents of North America, South America, Europe, Africa, Asia, and Australia.

## AAF International

Filtration has been at the heart of our business since 1921 and thanks to the high calibre of our products and services, we are trusted by many of the world's leading power and industrial companies. We provide our customers with the expertise, the solutions and the best available filtration technology to increase operational performance. Bringing clean air to life, our products provide the highest levels of indoor air quality, the lowest environmental emissions and the optimum safety conditions for employees and the wider community.

[aafintl.com](http://aafintl.com)

American Air Filter Company, Inc. has a policy of continuous product improvement. This document is provided for informal review and establishes no commitment or contract. We reserve the right to change any designs, specifications and products without notice, and we make no warranties regarding the subject matter of this document. Any use, copying or distribution of this document or any part of this document without our permission is prohibited.